

# AN UNUSUAL PATTERN OF PRESS-THROUGH SHINE MARKS ON THE LOWER INSIDE LEGS OF A PAIR OF MEN'S TROUSERS




Steve Pyott, B.Sc., M.Sc., CText  
A.T.I., Grad.Cert.Ed., Adv.Dip.Ed.  
TCS Textile Consultancy Services,  
Consulting Chartered Textile  
Technologist

## ENQUIRY

A pair of men's black trousers, labelled 'Expedition', were submitted for examination and report. The purpose of the enquiry was to comment on the most likely cause of the unusual pattern of iron press-through shine marks on the inside of the lower parts of both legs that the customer reported as having only become apparent after recent dry cleaning.

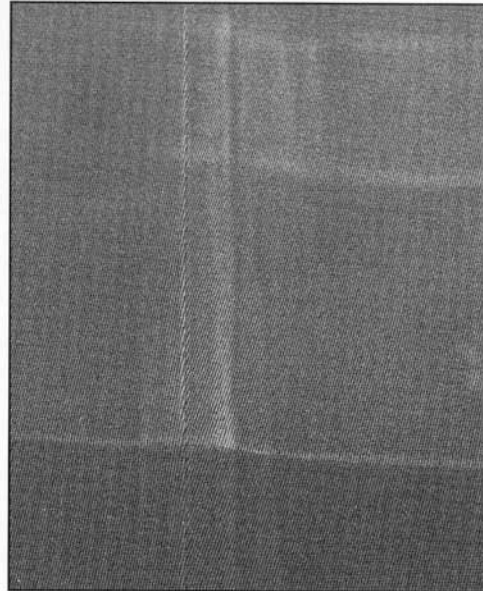
## LABELLING

- Designer/Manufacturer: Expedition
- Fibre Content Labelling: Nil – but almost certainly polyester
- Care Labelling: Dry Clean Only  60°C
- Size Labelling: 32

## EXAMINATION

The garment was examined on the lower part of the inside of both trouser legs and an unusual pattern of severe press-through shine marks was apparent, consisting of three sets of horizontal lines, two closer together, and along the inside side seam on each leg, clearly caused by using a domestic iron set at too high a temperature for the synthetic fibre content of this fabric.

The unusual pattern of the shine marks, particularly the press-through marks of each trouser cuff, clearly suggested that the ends of the trousers had been folded up inside the trouser legs, and then heavily pressed on the inside of the trouser legs, with an iron set at too high a



Top: press through mark on trousers  
Bottom: close up of damage



temperature, in order to shorten the garment temporarily so that another person, shorter than the original wearer could use it.

## DISCUSSION

The pattern of the press through marks clearly suggests that the garment has been temporarily shortened by folding the lower part of the legs up inside the trouser legs to create another hem higher up, and then heavily pressed with an electric domestic hand iron set at too high a temperature for this type of fabric.

It is highly unlikely that this temporary shortening operation has been carried out by the dry cleaner, particularly without instructions from the garment's owner. It is also highly unlikely that such heavy press-through shine marks in this very unusual pattern could be accidentally produced by the standard fabric-clad flat bed utility presses that dry cleaners routinely use for pressing trousers.

## CONCLUSIONS

There is no reasonable basis for determining that the severe iron press-through damage that is now apparent on this garment has occurred while it was being handled during dry cleaning and it is therefore considered highly unlikely that the dry cleaner is responsible for causing it.

Steven Pyott

B.Sc., M.Sc., CText A.T.I., Grad.Cert.Ed.,  
Adv.Dip.Ed.

Consulting Chartered Textile Technologist

## CERTIFICATE

*I, Steven Donald Pyott, do hereby certify that to the best of my knowledge and belief, the above information is accurate. Being an Associate of the Textile Institute, I have agreed to be bound by the terms of the Institute's Royal Charters, By-laws and Professional Code of Conduct for the time being in force. The Textile Institute accepts no responsibility for the information contained in this reply to your enquiry.*

Steven Pyott

**SOME of the information coming to you in your April 2001 issue of the "NATIONAL"**

*paper presented by  
NICK BANCROFT*

**TO TWIN CLEAN 200 IN CANBERRA**

*a visit to RADIANT DRYCLEANERS  
AND LAUNDRY, DARWIN, N.T.*

*details of entry for  
"DRYCLEANER OF THE YEAR 2002"*

*details of entry for  
"FILTERFAB OVERSEAS STUDY AWARD"*

## FREE MACHINE HIRE

### Do it yourself CARPET CLEANING



**Free  
hire of machine  
when you purchase  
Hagerty 5\*  
Carpet Shampoo**

#### NEW SOUTH WALES

Tulloch Aust. Pty. Ltd.  
(02) 9567 6755

#### QUEENSLAND

Brisbane Hanger  
Manufacturing Co.  
(07) 3343 5483

#### SOUTH AUSTRALIA

D C Chemical Supplies  
Pty. Ltd.  
(08) 8234 1121

#### VICTORIA

Stelco Chemicals  
(03) 9763 5733

#### WESTERN AUSTRALIA

Dry Cleaning Supplies  
(08) 9242 2533

#### TASMANIA

Kempo Manufacturing  
(03) 6334 0388  
Tas Isle Trading Pty. Ltd.  
(03) 6272 5288

#### NEW ZEALAND

Ancrom Industries Ltd.  
Auckland (09) 415 2222